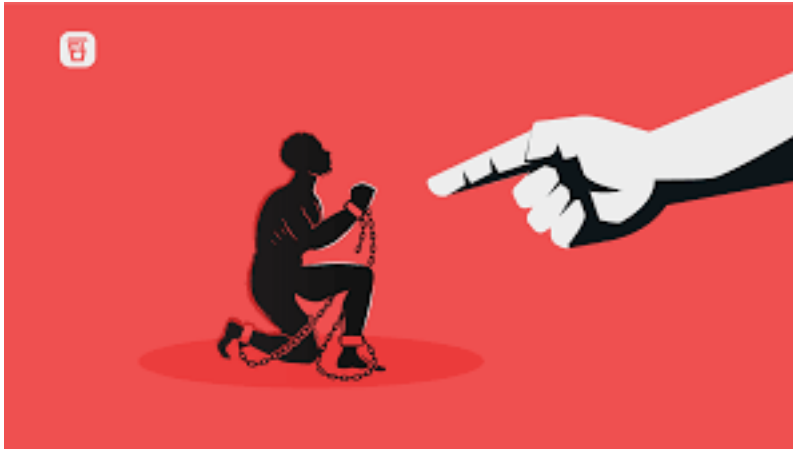


1. Modern Slavery

Topic: Social Justice



In News: A recent survey by Walk Free Foundation on modern slavery has revealed that two out of three Indian citizen have been subjected to modern slavery.

More on the Topic:

- Modern slavery refers to situations of exploitation that a **person cannot refuse or leave because of threats, violence, coercion, or deception.**
- Modern slavery includes forced labour, forced or servile marriage, debt bondage, forced commercial sexual exploitation, human trafficking, slavery-like practices, and the sale and exploitation of children.
- In all its forms, **it is the removal of a person's freedom**, their freedom to accept or refuse a job, their freedom to leave one employer for another, or their freedom to decide if, when, and whom to marry in order to exploit them for personal or financial gain.

About the Drivers of Modern Slavery:

- Modern slavery is inextricably linked with global challenges such as climate degradation, **gender inequality**, Covid-19, and conflict.
- The report has also indicated how modern slavery manifests. Chalking out some incidences, the report notes- forced and child marriage, orphan trafficking, state imposed forced labour, and orphanage trafficking.

Ranking of Countries based on Modern Slavery:

- The report divided countries into two categories- **most prevalent and least prevalent.**
- According to the report, most prevalent includes countries estimated to have the highest prevalence of modern slavery tend to be conflict-affected, have state-imposed forced **labour**, and have weak governance.

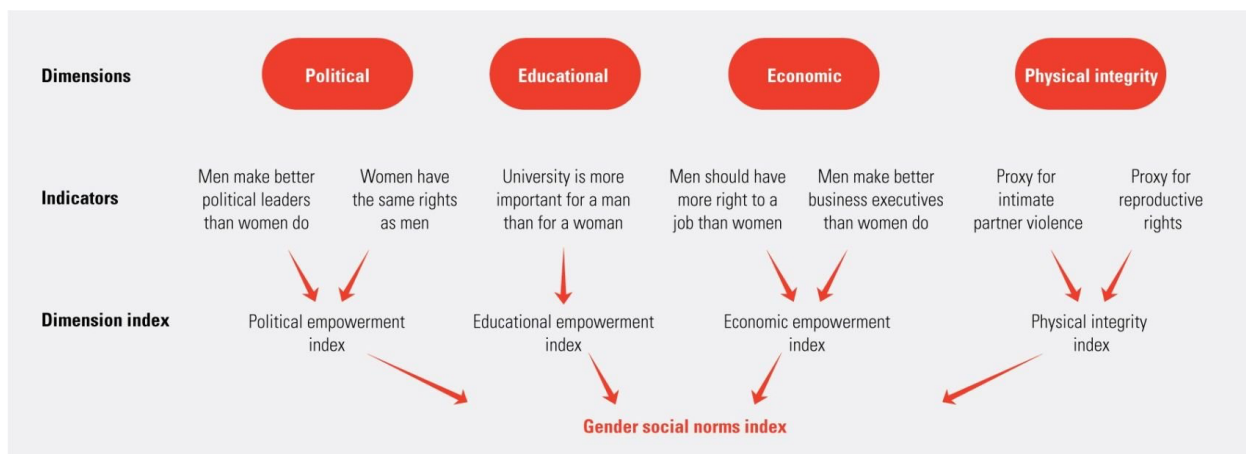
- Least prevalent includes countries with strong governance and strong government responses to modern slavery.
- Notably North Korea recorded the **highest prevalence of modern slavery** and Switzerland recorded the least.
- In terms of **number of persons, India tops the list with 11 million people working as forced labourers, followed by China, Russia.**
- 50 million people were living in modern slavery on any given day in 2021, an increase of 10 million people since 2016.
- Among the 50 million, 28 million suffer from forced labour and 22 million from forced marriages.

Way Ahead:

- The report has recommended the following to mitigate modern slavery.
- Strengthen **social protection and safety nets to boost resilience.**
- Repealing migration policies that place national security above human rights.
- Understanding Modern slavery as an intersectional issue, Providing modern slavery the attention it deserves in the policy making and implementation.

Source: Indian Express

2. Gender Social Norms Index 2023



Topic: Reports and Indices

In News: United Nations Development Programme (UNDP) has released the Gender Social Norms Index 2023.

More on the Topic:

Highlights of the Report:

- Nearly **90 per cent of both men and women have "at least one" fundamental bias against women.**



- The 2023 index showed "**no improvement in biases against women in a decade despite powerful global and local campaigns for women's rights**".
- Nearly 50% of people believe that men make better political leaders than women do, and around 40% believe that men make better business executives than women do.
- Biased gender social norms are major impediment to achieving gender equality and empowering all women and girls (SDG 5).
- Gender biases are pronounced in both lower and higher HDI countries.
- Prejudices "are widespread among men and women, suggesting that these biases are deeply embedded and influence both men and women to similar degrees."

According to the GSNI, biases against women can be quantified along four key dimensions.

- **Political dimension:** The two indicators under it are: women having the same rights as men is essential for democracy; and men make better political leaders than women.
- **Educational dimension:** The indicator within it is that university is more important for men than for women.
- **Economic dimension:** The two indicators under it are that men should have a greater right to a job than women; and men make better business executives than women.
- **Physical integrity dimension:** The two indicators under it are proxy for intimate partner violence; and proxy for reproductive rights.

Indian Scenario:

- The UNDP data showed that while Indians think women can become political leaders and earn well, **their husbands can still beat them.**
- Interestingly, the proportion of men and women holding such biases against women is almost equal.

Source: Hindu

3. Climate change made Arabian Sea conducive for severe cyclones



Topic: Geography



In News: According to recent research paper in Elsevier's Earth Science Reviews, the sea surface temperatures over the Arabian Sea increased by 1.2°C to 1.4°C in recent decade.

More on the Topic:

- The Arabian Sea has been comparatively less prone to cyclonic storms than the Bay of Bengal.
- In the usual course, there was an occurrence of one extremely severe cyclone every four-five years in the Arabian Sea.

Reasons behind increasing cyclonic activities in the Arabian Sea:

- The increase in cyclone activity in the Arabian Sea is tightly linked to the **rising ocean temperatures and increased availability of moisture under global warming.**
- The rising temperature is also enabling the Arabian Sea to **supply ample energy for the intensification of cyclones.**
- The Arabian Sea is also providing **conductive wind shear** for cyclones. For instance, a higher level easterly wind drove the depression of Cyclone Ockhi from the Bay of Bengal to the Arabian Sea.

About Cyclones:

- Cyclones are the **centers of low pressure.** They are surrounded by closed isobars having increasing pressure outward.
- The wind circulation is from outside towards the central low pressure. They rotate **anti-clockwise in the Northern hemisphere and clockwise in the southern hemisphere.**
- The inward flow of air is due to **pressure gradient force and the lowest pressure at the center.**
- Due to **Coriolis force**, blowing winds are deflected from their paths- rightwards in the Northern hemisphere and leftward in the Southern hemisphere.

Source: Hindu



4. Kari Ishad Mango

Topic: Environment and Ecology



In News: The Kari Ishad mango prominently grown in Ankola taluk of Uttara Kannada has bagged the Geographical Indication (GI) tag from the Geographical Indications Registry under the Union Government.

More on the Topic:

- According to the Geographical Indications Journal of the government, the Kari Ishad is accepted as one of the finest quality mangoes due to its unique aroma, luscious taste, high amount of pulp, shape, and size.
- In addition to Ankola, the mango is grown in Karwar and to a certain extent in Kumta of Uttara Kannada.

About GI Tag:

- A GI is primarily an agricultural, natural or a manufactured product (handicrafts and industrial goods) originating from a definite geographical territory.
- Typically, such a name conveys an assurance of quality and distinctiveness, which is essentially attributable to the place of its origin.
- The registration of a geographical indication is valid for a period of 10 years.
- It can be renewed from time to time for further period of 10 years each.



- In India, Geographical Indications registration is administered by the **Geographical Indications of Goods (Registration and Protection) Act, 1999** which came into force with effect from September 2003.
- The first product in India to be accorded with GI tag was Darjeeling tea in the year 2004-05.

Source: HT

5. Sunflower Seed

Topic: Economy



In News: Scores of farmers in Harayana has blocked a National Highway, demanding the purchase of sunflower crop at Minimum Support Price (MSP).

More on the Topic:

- Sunflower (*Helianthus annuus* L.) is an important oilseed crop in India, popularly known as “Surajmukhi.”
- Ukraine is the largest producer of sunflower followed by Russia.
- In India, Sunflower is grown mainly in Karnataka, Maharashtra, Andhra Pradesh, Punjab, and Haryana.
- As much as 90% of India’s sunflower oil requirement comes from Ukraine (70%) and Russia (20%).

Source: Hindu

6. Poshan Tracker App

Topic: e- Governance



In News: More than 57,000 migrant workers have registered for the special one nation one Anganwadi programme through Roshan Tracker App.

More on the Topic:

- The Government of India has launched the One Nation One Anganwadi Programme to strengthen the Anganwadi system and improve the quality of services provided to children and mothers.
- The programme aims to transform the Anganwadis into vibrant centres of early childhood care and education, nutrition, health and hygiene.
- The tracker aims **to provide seamless delivery of benefits given by the government to children under six years of age and pregnant women and lactating mothers, even if they relocate to another state.**
- The programme is **implemented through the Poshan Tracker App**, which is a mobile application that connects the beneficiaries with the nearest Anganwadi Centre (child care centre) in their current location.
- The Poshan Tracker management application provides a 360-degree view of the activities of the Anganwadi Centre (child care centres), service deliveries of Anganwadi Workers and complete beneficiary management for pregnant women, lactating mothers and children under six.

- It also digitizes and automates physical registers used by workers that helps improve the quality of their work.

Source: Hindu

7. Warkari community's palkhi Festival

Topic: Culture



In News: Delegates, attending G20 Digital Economy Working Group Conference had an opportunity to witness Warkari community's palkhi festival.

More on the Topic:

- Warkari is a community in the state of Maharashtra which is associated with the bhakti spiritual tradition of Hinduism since the thirteenth-century CE.
- This sect recognizes **as many as fifty poet-saints**. Some of the saints associated with this community are Dnyaneshwar, Namdev, Chokhamela, Eknath, and Tukaram.
- They worship **the deity of Pandharpur, known as Bhagwan Vitthal or Vithoba**. He is regarded as a form of god Vishnu.
- Palkhi festival showcases **the distinctive feature of the Maharashtrian culture**. This is a 1000-year-old tradition, which has been following by the warkaris (people who follow the wari, a fundamental ritual).



RV Educational Institutions®
RV Training Academy
(Sardar Vallabh Bhai Academy)

- People perform collective singing, dancing, chanting (Dnyanba-Tukaram in what are called as Dindis or organised group of warkaris) to the holy town of Pandharpur in Hindu months of Ashadh (June-July) and Karthik (November-December).

Source: Hindu

No 18, B.B.M.P Building
Kanakapura road ,
Tata Silk Farm, Jayanagar,
Bengaluru, Karnataka-560028

+91 89710 43904 | rvta@rvei.edu.in

Go, change the world